

Caplio G3
Digital Camera *model S*

Refined durability

Combining simplicity with style.



- The world's fastest* shutter response.
- Extra long battery life
- Choice of three power sources
- Marvelous 1cm macros
- Revolutionary M-continuous mode
- High sensitivity display
- Instant data transfer

0.14 sec.
shutter response

3.24 effective megapixels CCD

Optical **3x** zoom
Digital **3.4x**

* Please see inside for details.

Expertly crafted die-cast Magnesium body – designed to fit comfortably in your hand.

Remarkable style and craftsmanship

Renowned architect and industrial designer Masayuki Kurokawa, in collaboration with in-house designers at Ricoh, developed the Caplio G3 model S's unique shape from close observations on how we hold objects such as pens, soda cans, and regular 35mm cameras. The result is a remarkably stylish digital camera that's been carefully sculpted to fit comfortably in the hand of the user.



Caplio G3
model S



Designed by M. Kurokawa

Masayuki Kurokawa is an architect and industrial designer. He is also a professor of graduate school at the Kanazawa College of Art. Many of his works have been awarded a grand prix, a special award that was established in 1957 by the Ministry of International Trade and Industry.

Durable magnesium die-cast body

The Caplio G3 model S's body is made of extremely durable die-cast magnesium. This top quality material was specifically chosen to assist photographers in carrying out a vast array of challenging shooting opportunities while providing the strength to meet the everyday demands placed on their equipment. In short, it's a highly dependable tool built to go the distance.



Leading the competition to the future

0.14-seconds! The world's fastest* shutter response.

With a blazing shutter response of just 0.14- seconds – faster than regular 35mm SLR cameras – images are snapped up at practically the same time you press the shutter button. Capture the precious laugh of a child, a jumping dolphin or even a fast moving car – never miss that moment again!

* As of February 1, 2003 for all auto focus digital camera. Speed measured as time between pressing shutter release button and starting exposure in auto-focus mode without using focus lock.



Extra long battery life!

Take a remarkable 3,500 shots* between recharges by using the optional rechargeable lithium-ion battery. The Caplio G3 model S takes away the worry of ever running out of power.

* A maximum 3,500 shots under power-save mode (flash off, without zooming, LCD off, with VGA); up to 350 shots under normal usage conditions (with 50% flash and zoom usage, LCD on, 30 seconds between shots, reviews of all photos).

Choice of three power sources – AA battery included.

Choose between an optional rechargeable lithium-ion battery, AC adapter, or the convenience of two AA alkaline or nickel metal hydride batteries to power the Caplio G3 model S. This flexibility is ideal for those regularly on the road.



rechargeable lithium-ion battery



regular AA batteries
(alkaline/Ni/NiMH)

Marvelous 1cm macros

Capture the tiniest of details, even those practically invisible to the human eye, from a distance of only 1cm! No other digital camera in its class comes this close and clear. Its also has a built-in flash for shots as close as 16cm with no white-out effect.



High-sensitivity mode

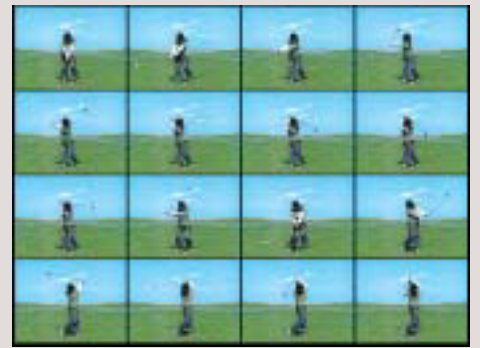
In high-sensitivity mode, the screen automatically illuminates subjects to aid in framing the picture when in darkened rooms or other dim environments.

Instant PC transfers

Transfer files by simply turning the camera off and connecting it to a PC via the USB cable. Instantly, the computer will import files at 3 megabytes per second into an automatically created folder using the installed Ricoh Gate software. Windows XP users can also take advantage of the WIA driver interface.

Sequential shot analysis

Analyze golf swings and other action sequences by taking advantage of the Caplio G3 model S's various 16-frame continuous modes that come in handy when you are uncertain about the start or finish of a particular action. When reviewing the sequential shots during playback, each frame can be enlarged individually and quickly browsed back and forth to feel like an animated movie.



Powerful, brilliant, and true

Superb 3.24 megapixel CCD

Enjoy all the power of a 3.24 megapixel 1/2.7-inch CCD that captures brilliant true color images with fantastic detail at a central resolution of 300 lines per millimeter. The Caplio G3 model S also incorporates an image processor that reduces noise and integrates surrounding circuitry that ultimately delivers extremely high quality output for photographs in a variety of size.



Combined 10.2x zoom!

Get in close to distant subjects with a 3x optical zoom plus a 3.4x digital zoom – for a combined total of 10.2x zoom. This is equivalent to a telephoto range of 35-357mm on a regular 35mm film camera.



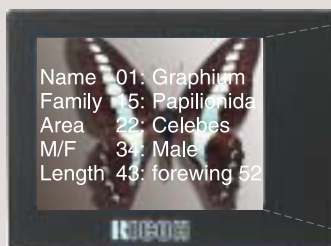
Versatile functionality at your fingertips

- 256-point light sensor for accurate exposure levels
- Internal 8MB memory and removable SD card
- Auto and white balance bracket
- Synchro monitor energy efficiency
- Quick photo review functionality
- Movie making and sound recording
- Six practical scene modes: portrait, sports, landscape, night scene, text, and high-sensitivity

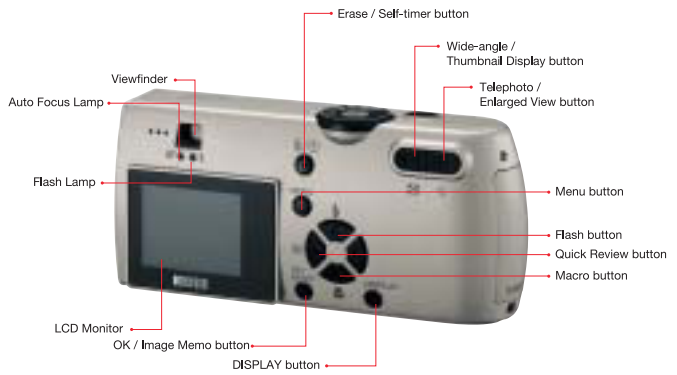
Convenient Image memo function

Image memo management

Caplio G3 model S's image memo allows users to input handy text messages directly onto captured photos when in review mode. Text data can also be edited prior to shooting using the ListEditor software, which features flexible templates and categories. This new function makes managing and classifying your images easy, convenient, and enjoyable.



Caplio G3 model S



Accessories Included

- USB Cable
- AV Cable
- Software CD (Win)
- AA Alkaline Batteries (2)
- Handstrap

- Instruction manual
- Warranty card



Optional Accessories



Caplio G3 model S Major Specifications

ITEM	DESCRIPTION
RECORDING FORMAT	Still: JPEG (Exif 2.2) DCF™ Design rule for Camera File system™, DPOF support Text: TIFF (MMR system, ITU-T.6) Motion: AVI (Open DML Motion JPEG) Sound: WAV (Exif ver. 2.2)
VIDEO SIGNAL METHOD	NTSC/PAL switchable
RECORDING MEDIA	Internal 8MB/SD Memory card™ (3.3V 8/16/32/64/128/256/512MB)/MultiMediaCard™
CCD	1/2.7-inch CCD with 3.34 million square pixels (effective 3.24 million pixels)
RESOLUTION	Still: 2048x1536/1280x960/640x480 Text: 2048x1536/1280x960 Motion: 320x240, 160x120
RECORDING MODES	STILL/STILL+SOUND/MOTION+SOUND/VOICE MEMO/ CONTINUOUS/ S-CONTINUOUS/M-CONTINUOUS/SCENE (Portrait, Sports, Landscape, Text, Nightscape, High-sensitivity)
PICTURE MODES	Fine/Normal
LENS	F: 2.6-4.7, 6 glass elements in 5 groups
ZOOM	Optical 3x zoom f=5.5-16.5mm (35-105mm in 35mm camera format) Digital 3.4x zoom
SHUTTER	Still: 8, 4, 2, 1-1/2000sec. (mechanical/electronic shutter) Motion: 1/30-1/2000sec. (electronic shutter)
SHOOTING RANGE	30cm (11.8in.)~∞/Macro: 10cm (0.4in.)-60cm (23.6in.) Wide, 16cm (6.3in.)-60cm (23.6in.) Tele
ISO SENSITIVITY	AUTO/Selectable ISO (equivalent to 125/200/400/800)
OPTICAL VIEWFINDER	Real-image
MONITOR DISPLAY	1.6" Translucent Amorphous Silicon TFT LCD (approx. 80,000 pixels)
BUILT-IN FLASH	AUTO/ON/SLOW SYNCHRO/OFF/RED-EYE REDUCTION,
FOCUS	AUTO-FOCUS/MANUAL FOCUS/FIXED FOCUS (snap/∞)
EXPOSURE MODES	Programmed AE: TTL-CCD method Photometric system: CENTERWEIGHT/SPOT/MULTI
EXPOSURE ADJUSTMENT	MANUAL EXPOSURE COMPENSATION (+/- 2.0 EV in 1/3EV steps)
WHITE BALANCE	AUTO/DAYLIGHT/OVERCAST/TUNGSTEN LIGHT/FLUORESCENT LIGHT/MANUAL (One Push)
SELFTIMER	Approx. 10sec./2sec. Delay
INTERFACES	PC: USB *1 Audio Out/Video Out
BATTERY	AA Alkaline x 2 (NiMH possible), or Rechargeable Lithium-Ion Battery (optional)
DIMENSIONS (W x D x H)	123.9 x 36.4 x 56mm (4.9 x 1.4 x 2.2inch) excluding projections
WEIGHT	Approx. 175g (6.2oz.) (without battery, SD memory card, Hand strap)

*1 Limited to PCs with Windows 98/98SE/2000/Me/XP pre-installed.

Software CD (Windows)

SYSTEM REQUIREMENTS	Windows
OS	Windows 98/Windows 98 Second Edition Windows Me Windows 2000 Windows XP
CPU	Pentium® II processor or faster
MEMORY SPACE	Windows 98/98SE: 32MB or more (96MB recommended) Windows 2000: 128MB or more (256MB recommended) Windows Me: 64MB or more (96MB recommended) Windows XP: 128MB or more (256MB recommended)
HARD DISK SPACE	10MB or more

CONTENTS

RICOH Gate La for Windows*2 (Launcher Application)
DU-10s
USB driver
WIA driver (for Windows XP)
Acrobat Reader*4 (for Windows 98/98SE/Me/2000/XP)

*2 No camera control function.

* Only USB connection is possible when connecting the G3 model S to a PC. It is not compatible with serial connection.

Caplio G3 model S Optional Accessories

MODEL	
FM-SD53	PC card adapter
DB-43	Rechargeable Lithium-Ion Battery
BJ-2	Battery Charger
AC-4a	AC Adapter

* Please ask your nearest Ricoh Sales Office about availability of the Optional Accessories.

* Specifications are subject to change without notice.

* Microsoft, Windows and DirectX are either registered trademark of Microsoft Corporation in the U.S. and/or other countries.

* The SD logo is a trademark.

* All other trademarks mentioned herein are the property of their respective owners.

* All screen shots and sample images shown in this catalog are simulated.



For more information, visit:

http://www.ricoh.co.jp/r_dc/dc

This brochure was printed on recycled paper.

RICOH

RICOH COMPANY, LTD.

3-2-3, Shin-yokohama
Kohoku-ku, Yokohama-shi 222-8530, Japan
Phone: 045-477-1738 Fax: 045-477-1797 http://www.ricoh.co.jp/r_dc

RICOH EUROPE B.V. (PMMC EUROPE)

Oberrather Straße 6, D-40472
Düsseldorf, Germany
Phone: 0211-6546-0 Fax: 0211-6546-308 <http://www.ricohpmmc.com>

RICOH UK LTD. (PMMC UK)

Ricoh House, 1 Plane Tree Crescent, Feltham,
Middlesex, TW13 7HG, England
Phone: 0208-261-4000 Fax: 0208-261-4220

RICOH FRANCE S.A. (PMMC FRANCE)

383, Avenue du Général de Gaulle - BP 307-931-13
Clamart Cédex, France
Phone: 01-4094-3276 Fax : 01-4094-3276

RICOH ESPANA, S.A. (PMMC SPAIN)

Av. Litoral Mar, 12-14, 08005
Barcelona, Spain
Phone: 093-295-7600 Fax: 093-295-7605

RICOH EUROPE B.V. (PMMC BENELUX)

Koolhovenlaan 35, 1119 NB Schiphol-Rijk,
The Netherlands
Phone: 020-5474111 Fax: 020-5474540

RICOH HONG KONG LIMITED

Personal Multimedia Products Center
21/F., Tai Yau Building, 181 Johnston Road, Wan Chai, Hong Kong
Phone: 2528-2823 Fax: 2566-3647/2866-1985

RICOH AUSTRALIA PTY. LTD.

8 Rodborough Road, Frenchs Forrest, N.S.W. 2086
Phone: 02-8977-1111 Fax: 02-8977-1100
<http://www.ricoh.com.au>

RICOH CORPORATION

5, Dedrick Place, West Caldwell, NJ
07006 U.S.A.
Phone: 888-742-6410 <http://www.ricohzone.com>